



PREFORMED LINE PRODUCTS
The connection you can count on.

- COMMUNICATIONS
- ENERGY
- SPECIAL INDUSTRIES
- SOLAR



TRADE RANGE



The connection you can count on



ABOUT PLP AUSTRALIA

Preformed Line Products Australia is part of the global PLP group of companies. The headquarters are in Cleveland, Ohio, USA, with three manufacturing facilities in the USA.

Internationally, PLP maintains wholly-owned subsidiaries in Argentina, Australia, Brazil, Canada, China, Colombia, France, Great Britain, Indonesia, Malaysia, Mexico, New Zealand, Poland, Russia, South Africa, Spain and Thailand. These international operations work in unison to provide PLP with outstanding global market coverage and customer service in more than 140 countries around the world.

The manufacture of PLP products in Australia began in 1962 and the company therefore has a long and enviable reputation for meeting its customers' needs on multiple levels, such as product quality, engineering expertise, customer service and delivery

of orders on time to customers.

PLP Australia's operation boasts in-house manufacturing, technical support, testing laboratory (NATA approved), sales and administration.

PLP's broad range of product allows us to offer our customers a complete solution for day to day and projects' needs. Apart from sourcing a variety of products from other PLP subsidiaries, in particular those in the Asian region.

PLP Australia is the exclusive Australian importer and distributor of distribution transformers from Toshiba Transformers, a large transformer manufacturer based in Hyderabad, India. We also import and distribute a wide range of ceramic and polymer insulators from manufacturers all over the world.

**GROWTH
THROUGH
ACQUISITION
& STRATEGIC
DIVESTITURES**



————— 1962 ————— 2000 ————— 2009 —————














These products are complimentary to PLP's traditional range of line hardware, communication and substation product.

To continue to do this, PLP Australia strives to supply competitively priced, high quality products and delivered as promised with the correct documentation. We ensure customers are receiving the "Right Product For The Application" - First Time & Every Time.

And with our new Trade Range catalogue allows this extensive range of product more accessible to the electrical contractors via the vast network of electrical wholesalers throughout Australia.

CONTENTS

	P.4 - P.9 >	Protection & Earthing
	P.10 - P.17 >	Low Voltage ABC
	P.18 - P.19 >	Hooks / Connectors
	P.20 - P.21 >	Stainless Steel Strapping
	P.22 - P.23 >	Lugs & Crimps
	P.24 - P.25 >	Compression
	P.26 - P.27 >	Cable Clamps
	P.28 - P.31 >	Underground
	P.32 - P.43 >	Communications



2012

2014



Heavy Duty Earthing Connector

Type CEC

Features:

- High strength, high conductivity connection
- Shake-proof, permanent and corrosion resistant
- High fault current capacity
- Versatile: covers wide variety of single or multi-earthing applications including grid systems
- Two profiles - 'C' and '6' - cover a wide variety of applications

Profile C



Profile C Part Number	Die Set	Conductor Combination mm ²
D-CEC070	DUOT	70 - 35 50 - 50 70 - 50 70 - 70
D-CEC095	DU1315	70 - 95 95 - 95

Profile 6



Profile 6 Part Number	Open Sec.	Tap Off Dia. (mm)	Conductor Cross Sec. mm ²	Die Set
D-CEC15070	Conductors 50 - 120mm ² or Earth rods 13 - 15mm diameter	11	50 - 70	DU1315
D-CEC15120	Conductors 50 - 120mm ² or Earth rods 13 - 15mm diameter	15	95 - 120	DU1315

Earth Rod Clamps

Single Conductor - Parallel



Simple and robust, these pinch and U-Bolt type clamps have a vee groove embodied in the casting to accommodate the earthing cable.

Feature:

- Bodies are made from a high copper content alloy.

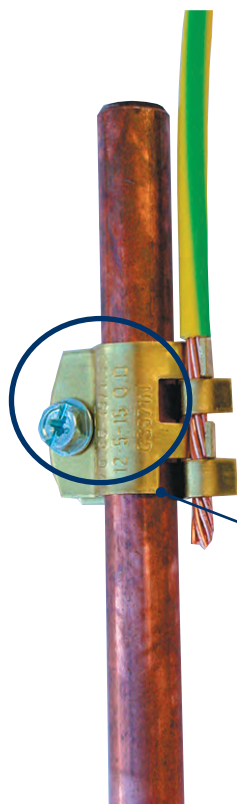
Part Number	Rod Dia. (mm)	Conductor Range	
		mm ²	Dia. (mm)
D-CLAMP210	13 - 15	16 - 120	5.10 - 14.21

Non-extendable Earth Rods (Domestic)

Plated

Each rod incorporates an integral driving point, machined (not ground) to preserve the strength and rigidity of cold-drawn steel.

Part Number	Description
PNE1314	Domestic earth rod
D-EC13D	Earth clip - Suitable for cables in the range 4 - 25mm ²



DOMESTIC
EARTH ROD CLIP



Note: Supplies completed with rod and tag.



Extendable Earth Rods

Taperlock Coupled Type CTE Copper Clad (Sheathed)

Type CTE earth rods are among the simplest to use. They have identical taper ends and are joined by a one-piece tapered coupling which locks upon driving. These rods may be driven by hand or machine.

Dia.	13MM	15MM
------	------	------



CTE1314T
Tapered End

EATHRODS

Length (mm)	Part Number	Part Number
1440	CTE1314	CTE1514
1800	CTE1318	CTE1518
2000	-	-
2400	CTE1324	CTE1524
3000	CTE1330	CTE1530



CCT13

HAND DRIVING HEAD



DHT15

Average Driving	DHT15	DHT15
	DHTU22	DHTU22
Hard Driving	DHTU25	DHTU25

COUPLING



DPT13

Part Number	CCT13	CCT15
-------------	-------	-------

DRIVING POINT



SDP13T

Average Driving	DPT13	DPT15
Hard Driving	SDP13T	SDP15T

Extendable Earth Rods

Taperlock Coupled Type STE Stainless Steel Clad (Sheathed)

Type STE earth rods are among the simplest to use. They have identical taper ends and are joined by a one-piece tapered coupling which locks upon driving. These rods may be driven by hand or machine.

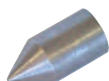
DIAMETER	13MM	14MM
----------	------	------



DHT15

STE
Tapered End

SCT13



DPT12



SDP12T

EATHRODS

Length (mm)	Part Number	Part Number
1440	STE1314	STE1415
1800	STE1318	STE1418
2400	STE1324	STE1424
3000	STE1330	STE1430

HAND DRIVING HEAD

Average Driving	DHT15 DHTU22	DHT15 DHTU22
Hard Driving	DHTU25	DHTU25

COUPLING

Part Number	SCT13	SCT15
-------------	-------	-------

DRIVING POINT

Average Driving	DPT12 SDP12T	DPT15 SDP15T
-----------------	-----------------	-----------------



DHT15



CCE1314
Swaged End



CCA13



DP13



SDP13

Extendable Deep Driving Rods

Flush Jointed Series Type CCE - Copper Clad (Sheated)

These deep driving flush-jointed electrodes have identical swaged ends to take driving points and coupling pins. They may be either hand or machine driven.

DIAMETER	13MM	15MM
----------	------	------

EATHRODS

Length (mm)	Part Number	Part Number
1200	CCE1312	CCE1512
1440	CCE1314	-
1800	CCE1318	CCE1518
2400	-	CCE1524
3000	-	CCE1530

HAND DRIVING HEAD

Average Driving	DHT15	DHT15
-----------------	-------	-------

COUPLING

Part Number	CCA13	CCA15
-------------	-------	-------

DRIVING POINT

Average Driving	DPT13	DPT15
Hard Driving	SDP13	SDP15

Extendable Earth Rods (Plated)

Type PNE, copper plated earth rods provide an effective solution for commrcial earthing solutions. Manufactured from low carbon high strength steel with pure copper plating > 250 microns, molecularly bonded onto the steel rod. The simple threaded sections with couplings, driving points and driving heads ensure the utmost integrity of the earthing solutions.



PNE19
DRIVE

PNE19
COUPLER

PNE19
POINT

Part Number	Diameter (mm)	Length (mm)	Unit Weight (kg)
PNE1918-T	17.2	183	3.37
PNE1924-T	17.2	244	4.55
PNE1930-T	17.2	305	5.62
PNE19-COUPLER			
PNE19-DRIVE			
PNE19-POINT			



Earthing Enhancement Compounds

Features:

- Stable, high conductivity providing long term low ground resistance.
- High expansion, low shrink characteristics.
- Non-toxic, non-corrosive.

Installation: Apply as a dry mix or pourable slurry. Dry mix will yield a volume of approximately 0.0176m³ (roughly 57 bags to the cubic metre). Slurry will yield a volume of approximately 0.030m³ when mixed with 20 to 25 litres of water (roughly 33 bags to the cubic metre).

Packaging: 20kg non-tear, plastic lined bags.

Part Number	Composition	Standard
D-EARTHRITE	Bentonite, Gypsum, Sodium Sulphate	N/A
D-EARTH5050	Bentonite, Gypsum	Conforms to AS2239



Connection Boxes

Boxes ERB1 and ERB3 feature hinged inspection lids & cable entry holes on the sides. Both boxes provide ample space for conductors and clamps.

Part Number

D-ERB1

D-ERB3



Earthing Bond

For Commercial Earthing Installations

The earthing bond system provides an earth connection welded to the steel reinforcement, thus offering a virtually indestructible, stable and low resistance path to earth soil. Other sizes available upon request.

Part Number	Description
D-C70	Bonding Cable: 70mm ² 1 sec Short Current Rating: 5kA Weldable Lug Dia: 12mm Terminal Thread: M10 Thread Depth: 20mm Cable Length: 3m



Service Strain Clamps

BCST Series are a bolted type service strain and suspension clamp.

Features:

- Glass reinforced nylon clamping block.
- Blocks are spring loaded for ease of cable insertion.
- Available in galvanised steel or glass reinforced nylon straps.
- Available in open hook or closed eye.
- M10 stainless steel fasteners.
- UV stabilised.

Part Number	Conductor Construction mm ²	Length mm
BCST-2025-3G	2 x (10 - 35)	170
BCST-2025-3GA	2 x (10 - 35)	170
BCST-2025-3P	2 x (10 - 35)	170
BCST-2025-3PA	2 x (10 - 35)	170
BCST-4035-3P	4 x (10 - 35)	170
BCST-4035-3PA	4 x (10 - 35)	170
BCST-4035-3G	4 x (10 - 35)	170
BCST-4035-3GA	4 x (10 - 35)	170

G = Galvanised Strap
 GA = Galvanised Strap (closed eye)
 P = Glass-Filled Nylon Strap
 PA = Glass-Filled Nylon Strap (closed eye)



Service Strain Clamps

Wedge type strain clamp with sliding jaws. Manufactured from UV stabilised glass reinforced nylon and a stainless steel strap. Designed for 2,3 and 4 core ABC twisted cables.

Features:

- Stainless steel bail arm - detachable.
- Conforms to requirements of AS3766.
- Wedge action created by sliding jaws.
- No loose components, jaws attached body.
- M10 stainless steel fasteners.
- UV stabilised.

Part Number	Number of Cores	Range of Cable mm ²	Hook or Eye	Min. Failing Load
IBST435-2	2 up to 4	4 - 35	detachable	2.5kN

Suspension Clamps



The AS series of LV ABC Suspension Clamps are intended for use on straight runs and for line deviation angles up to 25°. These suspension clamps are suitable for coastal environments and are manufactured from high strength corrosionresistant aluminium alloy, incorporating neoprene bushes and stainless steel hardware. An optional failure link is built into the fitting.

The clamps are designed as a one-piece format, eliminating the problems of dropping components whilst installing the clamp. The AS suspension clamp greatly assists linesmen by supporting the cable in the open position, and allowing fast installation by simply closing the clamp and tightening the fastener.

Features:

- EPDM UV stabilised rubber insert.
- Galvanised body - with captive bolt slot.
- Galvanised steel hardware - oversize wing nut.
- Suitable for line deviation up to 30 degrees.
- Conforms to requirements of AS3766.

Part Number	2 Core mm ²	3 Core mm ²	4 Core mm ²
IBSC425	-	-	25
IBSC435	50	50	35

Safety Service Disconnecter (SSD)



Designed with safety in mind, Preformed Line Products Safety Service Disconnecter ensures controlled disconnection of service under dynamic impact loading. The product severs the conductor after a high impact load, ensuring the span falling to ground is in an un-energised state. The energised cable remains at the pole attachment point, insulated and well away from the general public. The PLP SSD™ can be installed on existing services with no interruption to the consumers power supply.



Fully Insulated Body

The PLP SSD™ is manufactured from UV stabilised and fibre reinforced nylon which provides the fitting with complete insulating and mechanically strong features.

All Components

All components are held captive within the body so there are no loose parts to fall to ground when installing or upon activation.

No Requirement For On-Site Setting

The product is pre-set to the required breaking load in the factory. The setting arrangement for the load is totally tamper proof.

Only Activates on Impact Above A Specified Load

The PLP SSD™ will only activate if a load is applied of approximately 1.9 kN. The SSD™ will not activate simply due to an increase of tension to the cable such as possum walking along the service. Accurate and reliable failure is guaranteed by the shear pin being specifically sized to the failure load.

Can Be Installed Within 5 Minutes

Due to the simple nature of the design of the product, it is easily installed within 5 minutes. Simply place the cable into the clamp and push it into the slots along the body, tighten the nuts on the bolted clamp till secure and bring the bridle around, clip it onto the bollard and snap the cover in place. Installation is now complete! No special equipment is required.

No Need to Disconnect Customer's Supply

To install the PLP SSD™, there is no need to disconnect the customer's supply because the conductor is not severed to install plugs or sockets. Therefore, the installation of the SSD™ can be done at any time, night or day, without having to advise customers - there is no disruption at all!

No Possibility of Service Failure Due To Poor Contact

There are no active electrical components within the SSD™ (such as contacts) which eliminates the possibility of an electrical breakdown or hot joints.



Part Number	Conductor Size (mm ²)
SSD-2X25AL19	2x25mm AL XLPE



House Service Connector

The new D-K96A is a fully overmoulded waterproof connection designed with solid internal chambers. It also includes a new shearcap indicator system. It is used to make electrical connection from an insulated supply cable to an insulated consumer cable.

Features:

- Bi-metal corrosion resistance accepting both copper and aluminium cables.
- Completely overmoulded design.
- Multiple rib sealing system to ensure integrity of seal on all cable sizes - including fully ribbed ABC.
- Central solid barrier dividing each chamber.
- Fully insulated and water proof.
- Overmoulded shearcap bolt.
- Fits the existing main connection box (MCB).
- Consumers cable can be disconnected and reconnected.
- Tested to AS/NZS4396.
- Connectors is marked with cable sizes and strip requirements.
- Consumers and mains sides are clearly differentiated with markings and bolt colour.

Part Number	Supply Cable Range mm ²	Supply Connection Type	Supply Bolt Colour	Customer Cable Range mm ²	Customer Connection Type	Customer Bolt Colour
D-K96A	6 - 35	Ins Piercing	Black	4 - 35	Strip Cable	White



D-K451



D-K455

Mains Connection Box - K Series

These products contain the 'K' Series range of house service connectors and provide an environmentally protective chamber in which to house and mount the connectors. It also provides protection of the consumers mains against UV degradation. The boxes come in single and three phase models with the D-K96A.

Features:

- IP66D Rated.
- Suits easy entry of consumers mains through the rear of base.

Part Number	Single Phase	Three Phase
D-K451	Y	N
D-K455	N	Y

Connectors - R Series

This range of product provides for XPLE or PVC copper or aluminium service cable connection to bare copper and bare aluminium mains in a complete moisture free environment. The service connection is made with insulation piercing technology where there is no need to strip the cable.

Features:

- Copper connector has forged body for added strength.
- All tested to applicable requirements of AS/NZS4396.
- Both mains and tap bolts incorporate shearhead technology for use with a standard M8 socket.
- Polycarbonate windows employed on all tap facilities to ensure the operator can see the actual connection.
- Single and double bolt versions

Part Number	Material Type	Bare Mains Range	Area mm ²	O.D. mm	Tap Range mm ²
R235	Copper	7/1.00 - 19/3.00	5.5 - 135	3 - 15	6 - 35
R235-4	Copper	7/1.00 - 19/3.00	5.5 - 135	3 - 15	6 - 35



R235



R235-4

Part Number	Material Type	Bare Mains Range	Area mm ²	O.D. mm	Tap Range mm ²
R236	Aluminium	7/1.75 - 19/3.75	16 - 210	5 - 19	6 - 35
R236-4	Aluminium	7/1.75 - 19/3.75	16 - 210	5 - 19	6 - 35



R236-4



R236



D-K440



D-K446

Insulation Piercing Connectors

This I.P.C (Insulation Piercing Connector) is used to establish a tap connection from a low voltage ABC (Aerial Bundled Conductors), Aluminium or copper.

Part Number	Cable Range 1 mm ²	Cable Range 2 mm ²	No. of Bolts	Shear Head A/F mm
D-K440	10 - 95	1.5 - 6	1	13
D-K441	25 - 95	1.5 - 35	1	13
D-K442	35 - 150	1.5 - 25	1	13
D-K443	35 - 150	6 -35	1	13
D-K445	25 - 95	25 - 95	1	17
K446	50 - 150	50 - 150	2	17

This I.P.C (Insulation Piercing Connector) is used to establish a tap connection from low voltage ABC (Aerial Bundled Conductors) to a low voltage aluminium alloy or copper bare main conductor.



D-K470



D-K472

Part Number	Bare Cable Material	Bare Cable Size mm ²	Cable Range 2 mm ²	No. of Bolts	Shear Head A/F mm	Type of Piercing Connection
D-K470	Copper	7 - 95	6 -35	1	13	Standard
D-K472	Copper	7 - 120	25 - 95	1	17	Standard
D-K474	Copper	50 - 240	35 - 150	2	17	Standard
D-K471	Aluminium	7 - 95	6 -35	1	13	Standard
D-K473	Aluminium	7 - 120	25 - 95	1	17	Standard
K475	Aluminium	50 - 240	35 - 150	2	17	Standard

Installations Notes: 2 bolt IPC connectors must be tightened alternately to apply uniform pressure until shear head is operated. Implementation can be carried out on live-line but without load on the tap conductor.

***Important:** Two stage IPC's, are able to be installed whilst tap conductor is under load, up to 100A maximum.



Sumersible Pit Fuse Underground (FSD)

These fully waterproof, insulated connectors are suitable for installation in a pit and enable underground services to be connected quickly and safely by one person using a ratchet spanner. The connectors have been rigorously tested and avoid the need for stripping, compression tooling or heat shrinking.

Features:

- Terminals incorporate insulation piercing technology.
- Simple, quick, fail safe three step installation.
- Terminals accept a wide range of cables from 6 - 50mm²
- The K199 terminal has 2 cable entry points to suit phase connections and 100AMP fuse capacity with a 22 x 58 barrel type.
- The tapered flexible cable seal enables the connector to remain waterproof, even when cables are not in straight alignment with the connector.
- Terminals suit XLPE and PVC insulated single core and multi-core cables.
- Connector is able to be separated with the fuse remaining in the dead side.
- Plug provided to cap live side after connector is separated.

Part Number	Description	Range mm ²
D-K199	Fuse Insulation Piercing Pit Connector	6 - 50



Fuse Switch Disconnectors

Features:

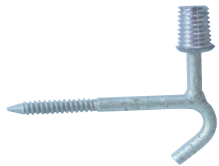
- UV stabilised glass reinforced body.
- Double circlip retention of fuse.
- Comes with integral attachment bracket - pattern B.
- Extraction pigtail tool - type - FEHBX .

Part Number	Cable Range mm ²	Fuse Rating	Fuse Type
NHP100AD	6 - 35	100	HRC 58 x 12



Swan Neck Bracket Pattern B

Part Number	Description
IPSNG	Swan Neck Bracket Pattern B



Combination Bracket Pattern B

Part Number	Description
COMBHOOK	Combination Bracket Pattern B



Open Hook Nut - Galvanised Steel

Features:

- To suit 16mm and 20mm threaded rods.
- Can be attached to thimble eye bolts or standard bolts where it is necessary to connect to a structure.

Part Number	Thread Size (mm)
ENGO-12	M12
ENGO-16	M16



M16 Safety Hook Bolts

Made of galvanised steel for use with either wood or concrete poles.

Part Number	Length (mm)	Pole Diameter Range (mm)	Threaded Length (mm)	Bolt Size (mm)
GSHB-16200	200	61 - 160	150	16
GSHB-16300	300	160 - 260	150	16
GSHB-16400	400	261 - 360	150	16
GSHB-16500	500	361 - 460	150	16



Safety Hook Plate

Part Number	Hook Size (mm)	Hole Size (mm)	Tension Rating (kN)
GSHP-16	M16	14	3

J Hook Driver



Features:

- Spring loaded ball so the hook snaps into place with ease.
- Indication mark, showing the alignment of the hook.
- The conical shape allows the user to safely guide the hook.
- Suits 12mm J & Round eye screw hooks.

Part Number	Description	Range
Tool-HD-01	J Hook Driver	12mm J & Round eye screw hooks



M16 and M20 Round Eye Bolt

Made of galvanised steel for use with either wood or concrete poles.

Part Number	Length (mm)	Bolt Size (mm)
GEBR-16200	200	100
GEBR-16300	300	100
GEBR-16400	400	100
GEBR-16500	500	100
GEBR-20200	200	150
GEBR-20300	300	150
GEBR-20400	400	150
GEBR-20500	500	150
GEBR-20600	600	150

Note: Other lengths available on request.



Split Bolt

Designed to join or tap arial hard drawn or insulated copper conductors while applying an evenly distributed load to ESAA specifications. Available in natural brass or electrotinned.


Part Number		Conductor Size (mm ²)	Conductor Diameter (mm)
Natural Brass	Electro Tinned		
HB22	HB22T	16	5.10
HB24	HB24T	35	7.65
HB25	HB25T	70	10.70
HB26	HB26T	95	12.46
HB28	HB28T	185	15.75

Parallel Groove Clamps


A universal aluminium line tap for equal and unequal combinations of aluminium and ACSR conductors. The clamp has interlocking fingers for maximum conductor contact.

Feature:

- Die cast aluminium



Part Number	Conductor Range				L (mm)	Hardware
	Run		Tap			
	Stranding	Overall Dia.	Stranding	Overall Dia.		
LT43-1	7/1.70 - 7/3.75	5.10 - 11.30	7/1.70 - 7/3.75	5.10 - 11.30	35	St Steel
LT75-1	7/3.00 - 19/3.75	9.00 - 18.80	7/3.00 - 19/3.75	9.00 - 18.80	110	St Steel



Part Number	Conductor Range				L (mm)	Hardware
	Run		Tap			
	Stranding	Overall Dia.	Stranding	Overall Dia.		
LTD58-1	7/1.75 - 7/4.50	5.25 - 13.50	7/1.75 - 7/4.50	5.25 - 13.50	70	St Steel
LTD75-1	7/3.00 - 19/3.75	9.00 - 18.80	7/3.00 - 19/3.75	9.00 - 18.80	110	St Steel



Stainless Steel Strapping

Features:

- Three sizes available, all with built-in handles
- Matching size buckles - 100 per box
- See through plastic tote, easy to dispense and recoil
- Full view of available band
- High corrosion resistance

Part Number	Width	Thickness	Length	Tensile Strength kN	Unit	Weight Kg
SSS-1230	12mm	0.70mm	30M	5.8	Roll	2.05
SSS-1630	16mm	0.70mm	30M	7.7	Roll	2.6
SSS-1930	19mm	0.70mm	30M	9.2	Roll	3.1

Band Lock



PLP unique Band Lock System attaches fittings safely and securely to steel or concrete poles. Supplied as one unit, it does not require any special tools. Quick and easy installation accepts 12, 16 or 19mm stainless steel strapping.

Part Number	Description	Unit
BL-10	Band Lock	Each

Grade 304 Stainless Steel Buckles



Part Number	Width	Amount	Unit	Weight Kg
SSSB-1230	12mm	100/Box	Each	0.85
SSSB-1630	16mm	100/Box	Each	1.30
SSSB-1930	19mm	100/Box	Each	1.50

Strapping Tool



Part Number	Description	Unit
SSS-TOOL	Strapping Tool	Each

ALMINOX

Applications:

- Aluminium to aluminium bolted or compression connections.

Contains sharp, conductive zinc granules suspended in a viscous petroleum base. Under pressure these granules make high pressure contact points with the parent metal to effect a sound electrical connection, whilst the base material seals the joint to prevent further corrosion. **Supplied in 325g squeeze tubes. Pack quantity box of 20.**



D-ALM325G

ALVANIA

Applications:

- Bolted connections, such as parallel groove clamps, either aluminium to aluminium, or bi-metal copper to aluminium.

When applied immediately after scratch brushing, ALV300 seals the exposed surface to prevent re-oxidation and permanently excludes the future ingress of air and moisture. ALV300 is extremely adhesive, resistant to water and has high temperature resistance to ensure continuous operation under all situations. **Supplied in 225g squeeze tubes. Pack quantity box of 20.**



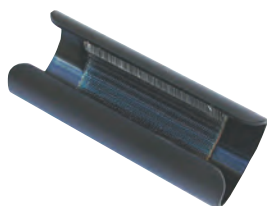
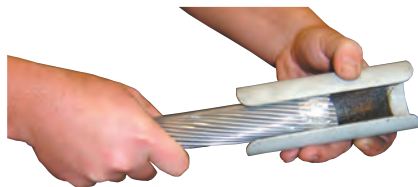
ALV300

Scratch Brushes

The use of a suitable scratch brush to remove any existing oxide film, dirt or grease from the conductor is essential to ensure a sound electrical connection. Separate brushes are used on aluminium and copper conductors to prevent transference of metal particles. **Pack quantity each.**



SB3



SB4

Standard Copper Lug

EPTCU



Features:

- Standard Copper Crimp Terminals
- Seamless copper tube
- Electro tinned
- Fit standard metric cables from 0.5 to 1000mm²
- Heat Cycle - IEC Standard 61238-1, Class B
- Mechanical Load Test to IEC 61238-1 1993 Clause 7



Part Number	Suits conductor mm ²	Hex die size	Hole size
EPTCU-6-4.4AF-M6	6	4.4 A/F	M6
EPTCU-10-5.7AF-M8	10	5.7 A/F	M8
EPTCU-10-5.7AF-M10	10	5.7 A/F	M10
EPTCU-16-6.3AF-M6	16	6.3 A/F	M6
EPTCU-16-6.3AF-M8	16	6.3 A/F	M8
EPTCU-16-6.3AF-M10	16	6.3 A/F	M10
EPTCU-16-6.3AF-M12	16	6.3 A/F	M12
EPTCU-25-7.7AF-M8	25	7.7 A/F	M8
EPTCU-25-7.7AF-M10	25	7.7 A/F	M10
EPTCU-25-7.7AF-M12	25	7.7 A/F	M12
EPTCU-35-9.2AF-M10	35	9.2 A/F	M10
EPTCU-35-9.2AF-M12	35	9.2 A/F	M12
EPTCU-50-10.4AF-M8	50	10.4 A/F	M8
EPTCU-50-10.4AF-M10	50	10.4 A/F	M10
EPTCU-50-10.4AF-M12	50	10.4 A/F	M12
EPTCU-70-11.5AF-M10	70	11.5 A/F	M10
EPTCU-70-11.5AF-M12	70	11.5 A/F	M12
EPTCU-70-11.5AF-M16	70	11.5 A/F	M16
EPTCU-95-14.2AF-M10	95	14.2 A/F	M10
EPTCU-95-14.2AF-M12	95	14.2 A/F	M12
EPTCU-95-14.2AF-M16	95	14.2 A/F	M16
EPTCU-120-16.5AF-M10	120	16.5 A/F	M10
EPTCU-120-16.5AF-M12	120	16.5 A/F	M12
EPTCU-120-16.5AF-M16	120	16.5 A/F	M16
EPTCU-120-16.5AF-M20	120	16.5 A/F	M20
EPTCU-150-18.5AF-M10	150	18.5 A/F	M10
EPTCU-150-18.5AF-M12	150	18.5 A/F	M12
EPTCU-150-18.5AF-M16	150	18.5 A/F	M16
EPTCU-185-20.0AF-M12	185	20 A/F	M12
EPTCU-185-20.0AF-M16	185	20 A/F	M16
EPTCU-240-23.1AF-M12	240	23.1 A/F	M12

Copper Link

EPCJ

Features:

- Solid drawn copper tube
- Centre dimples
- End reamed
- Heat Cycle - IEC Standard 61238-1, Class B
- Mechanical Load Test to IEC 61238-1 1993 Clause 7

Part Number	Suits conductor mm ²	Hex die size
EPCJ-16-6.3AF	16	6.6 A/F
EPCJ-25-7.7AF	25	7.7 A/F
EPCJ-35-9.2AF	35	9.2 A/F
EPCJ-50-10.4AF	50	10.4 A/F
EPCJ-70-11.5AF	70	11.5 A/f
EPCJ-80-14.2AF	80	14.2 A/F
EPCJ-95-14.2AF	95	14.2 A/F
EPCJ-120-16.5AF	120	16.5 A/F
EPCJ-240-23.1AF	240	23.1 A/F

*Larger sizes available upon request

Bi-Metal Compression Terminals

EPTB

Features:

- EPBT Bi-Metal Lugs
- For aluminium to Copper terminals
- Friciton welded
- Manufactured from high purity copper and aluminium rod
- Prefilled with jointing compound
- Individually packed in sealed plastic bags
- Long palm also available (EPTB2)
- Heat Cycle - IEC Standard 61238-1, Class B
- Mechanical Load Test to IEC 61238-1 1993 Clause 7

Part Number	Suits conductor mm ²	Hex die size	Hole size
EPTB-35-9.0AF-M12	35	9.0 A/F	M12
EPTB-40-14.0AF-M12*	40	14.0 A/F	M12
EPTB-50-13.2AF-M10	50	13.2 A/F	M10
EPTB-50-13.2AF-M12	50	13.2 A/F	M12
EPTB-70-13.2AF-M12	70	13.2 A/F	M12
EPTB-80-13.2AF-M12	80	13.2 A/F	M12
EPTB-80-17.3AF-M12*	80	17.3 A/F	M12
EPTB-95-17.3AF-M12	95	17.3 A/F	M12
EPTB-120-22.0AF-M12	120	22.0 A/F	M12
EPTB-150-22.0AF-M12	150	22.0 A/F	M12
EPTB-185-22.0AF-M12	185	22.0 A/F	M12
EPTB-185-22.0AF-M16	185	22.0 A/F	M16
EPTB-240-28.5AF-M12	240	28.5 A/F	M12
EPTB-240-28.5AF-M16	240	28.5 A/F	M16
EPTB-300-28.5AF-M12	300	28.5 A/F	M12

*ESE CCT specific

Compression Sleeves

Non Tension - AAC, AAAC and ACSR


Features:

- Tubular aluminium alloy
- Pre-packed with jointing compound
- Individually packed in sealed plastic bags
- Suitable for overhead and underground joints in industrial or commercial situations
- Use hexagonal crimp

Part Number	Conductor Code	Conductor Type	Conductor Stranding	A/F Die Size (mm)
CMNT36	Leo	AAC	7/2.50	14
	Chlorine	AAAC	7/2.50	
	Almond	ACSR	6/1/2.50	
	Raisin	ACSR	3/4/2.50	
CMNT44	Libra	AAC	7/3.00	18
	Fluorine	AAAC	7/3.00	
	Sultana	ACSR	4/3/3.00	
CMNT50	Mars	AAC	7/3.75	18
	Helium	AAAC	7/3.75	
	Banana	ACSR	6/1/3.73	
	Walnut	ACSR	4/3/3.75	
CMNT61	Mercury	AAC	7/4.50	22
	Hydrogen	AAAC	7/4.50	
	Moon	AAC	7/4.75	
	Iodine	AAAC	7/4.75	
	Cherry	ACSR	6/4.75/7/1.6	
CMNT68	Neptune	AAC	19/3.25	22
	Krypton	AAAC	19/3.25	

Compression Sleeves

Full Tension - AAC, AAAC and ACSR



Features:

- PLPFT fittings have been designed to suit AAC and AAAC distribution lines up to 66kV to give full tension under load to AS1154
- The FTA sleeves are suitable for ACSR but as a limited tension fitting carrying a maximum of 50% of the conductor UTS
- Pre-packed with jointing compound, individually packed in sealed plastic bags
- Uses hexagonal dies

Part Number	Conductor Code	Conductor Type	Conductor Stranding	A/F Die Size (mm)
PLPFT36A	Leo	AAC	7/2.50	14
	Chlorine	AAAC	7/2.50	
	Almond*	ACSR	6/1/2.50	
	Angling	ACSR	6/1/2.50	
PLPFT44A	Libra	AAC	7/3.00	18
	Fluorine	AAAC	7/3.00	
	Apricot*	ACSR	6/1/2.75	
	Apple*	ACSR	6/1/3.00	
PLPFT50A	Archery*	ACSR	6/1/3.00	18
	Mars	AAC	7/3.75	
	Helium	AAAC	7/3.75	
	Banana*	ACSR	6/1/3.75	
	Cherry*	ACSR	6/4.75/7/1.60	
CMFT61A	Bowls*	ACSR	6/4.75/7/1.60	22
	Baseball*	ACSR	6/1/3.75	
	Mercury	AAC	7/4.50	
	Hydrogen	AAAC	7/4.50	
CMFT68A	Moon	AAC	7/4.75	22
	Iodine	AAAC	7/4.75	
	Neptune	AAC	19/3.25	
	Krypton	AAAC	19/3.25	

*50% U.T.S. for ACSR conductors



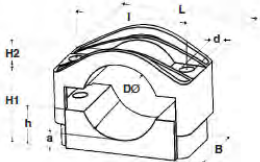
PSCCS

Plastic Substation Cable Clamp Single

The Single Hole type cable clamps fasten a wide range of single and multi conductor low, medium and high voltage cables. Designed to provide superior mechanical strength, ideal for installations where cables are subject to short circuits.

Features:

- Made of glass fibre reinforced polyamide (PA)
- Resistant to oils, UV, ozone, salts, moisture, acids and even radioactive emissions
- Self-extinguishing V-0 (UL94), halogen-free, low smoke
- Temperature range from -40°C to 120°C
- Black coloured
- Available pre-mounted
- Stainless steel fasteners included



Testing:

By UL, KEMA, Eaton and Centrilab (reports available upon request).

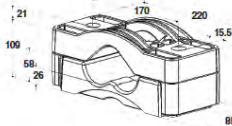
Part Number	Dimensions (mm)									Mechanical Strength
	DØ	L	B	l	d	H1	H2	h	a	
PSCCS26-38	26-38	92	60	60	12	33-49	7	18	7	30,000Nm
PSCCS36-52	36-52	105	60	75	12	39-55	15	23	8	20,000Nm
PSCCS50-75	50-75	126	60	95	12	46-71	22	30	9	20,00Nm
PSCCS75-100	75-100	200	80	150	12	70-95	32	45	10	68,000Nm



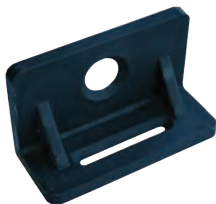
PSCCT

Plastic Substation Cable Clamp Triple

Triple type cable clamps fasten a wide range of single and multi conductor low, medium and high voltage cables in triangular formation. Designed to provide superior mechanical strength, ideal for installations where cables are subject to short circuits.



Part Number	Dimensions (mm)									Mechanical Strength
	DØ	L	B	l	d	H1	H2	h	a	
PSCCT27-38	3X27-38	180	75	125	15.5	63	12	35	16.5	35,900Nm
PSCCT38-51	3x38-51	195	80	145	15.5	84	16	45	20	39,800Nm
PSCCT51-69	3x51-69	220	85	170	15.5	109	21	58	26	69,900Nm
PSCCT69-90	3x69-90	266	90	215	15.5	-	-	72	-	47,800Nm
PSCCT90-118	3x90-118	321	100	270	15.5	-	-	89	-	55,400Nm



POLE FIX

Using a stainless steel strap and two Polefix holders, all types of Dutchclamp cable clamps, cable blocks and other products can be attached to (steel or concrete) poles that may not or cannot be drilled into.

Features:

- Made of glass fibre reinforced polyamide (PA).
- Resistant to oils, UV, ozone, salts, moisture, acids and even radioactive emissions.
- Self-extinguishing V-0 (UL94), halogen-free, low smoke.
- Temperature range from -40 °C to 120 °C.
- Black coloured.

Part Number	Dimensions (mm)						
	Mounting Hole Ø	L	W	H	Thickness	Groove Length	Groove Width
Polefix	15	80	47	33	6	40	2.5

URD Turret - Series Eleven

High density injection moulded polyethylene turrets and bases

Easily transported and installed

Strong but light base and turret allow easy transport and installation. Turret is easily and simply secured to base with D-head stainless steel or socket button-head screws.

Maintenance-free design

The all weather polyethylene construction requires no painting or maintenance, as protection against corrosion/moisture is not an issue.

Turret Details

Material:	High impact polyethylene.
Colour:	Green
Venting:	For vented turrets add suffix "V". For example, the catalogue number for 'tall vented' would be UT11GV.
Markings:	Danger Electricity
IP Rating:	IP44



Turret

TURRET

Part Number	Vent	H	W	D
UT11G	N	550	293	225.5
UT11GV	Y	550	293	225.5
UT11SG	N	335	306	238.5
UT11SGV	Y	335	306	238.5

BASE



Base

Part Number	H	W	D	Supplied Hardware
UEC11MG	350	550	510	None
UEC11MGE	350	550	510	D-Head DHB10MW22
UEC11MGS	350	550	510	Socket Screw UESM10



Type UEP



UEP288

URD Series Eleven Panels

These panels fit the tapered slots cast in the UEC Series Eleven bases. Order panels separately. Small panel UEP240 and UEP288 fit the small UT11SG turret. All other panels require the larger UT11G Series turrets.

Materials:

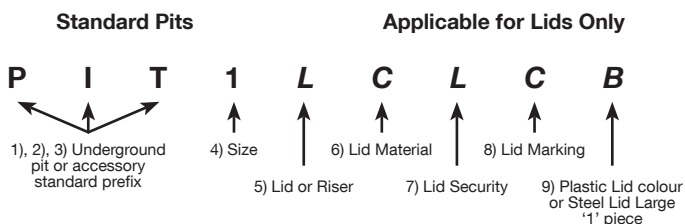
Switch panel type X to AS1795 except panel UEP288 which is injected moulded plastic.

Part Number	H	W	Type	Take Offs	Neutral Bar
UEP288	205	288	Blank	N/A	N/A
UEP240	240	205	Blank	N/A	N/A

Consumer Connection Pits

Consumer connection pits are made of high strength HDPE and polypropylene plastic exhibits excellent weather and chemical stability for long installation life. Design embodies special ribbing for on site strength and stability. Pits are extendable. Pit lids are available in concrete and galvanised steel checkerplate.

Pit Nomenclature



Character Representation

- 1) **P**
 - 2) **I**
 - 3) **L**
 - 4) Refer table
 - 5) Accessory:
 - L** = Lid
 - R** = Riser
 - 6) Lid Material:
 - C** = Concrete
 - P** = Plastic
 - S** = Steel
 - 7) Lid security:
 - L** = Lockable (Steel Only)
 - T** = Tamper Proof (Standard)
 - 8) Lid marking:
 - C** = Communication
 - E** = Electrical
 - U** = (unmarked)
 - 9) Lid colour (for plastic only)
 - B** = Black
- or**
- Lid Size:
 - 1** = Non-preferred one piece lid for larger size pits



Applicable for Lid part numbers only



Consumer Connection Pits



PIT1

Pit / Lid	Lid Material	Overall Dim Pits - inside dims Lids - Per Pit	Weight (kg)
PIT1		419 x 155 x 350	3.00
PIT1LCT(E/C/U)	Concrete	1 lid per pit	8.00
PIT1LST(E/C/U)	Steel	1 lid per pit	4.80

Riser for PIT1 is PIT1, height increase from 100mm to 200mm



PIT2

Pit / Lid	Lid Material	Overall Dim Pits - inside dims Lids - Per Pit	Weight (kg)
PIT2		553 x 180 x 514	6.00
PIT2LCT(E/C/U)	Concrete	1 lid per pit	16.00
PIT2LST(E/C/U)	Steel	1 lid per pit	7.70

Riser for PIT2 is PIT2, height increase from 100mm to 325mm



PIT5

Pit / Lid	Lid Material	Overall Dim Pits - inside dims Lids - Per Pit	Weight (kg)
PIT5		580 x 330 x 580	12.00
PIT5S*		1 lid per pit	
PIT5LCT(E/C/U)	Concrete	1 lid per pit	30.00
PIT5LST(E/C/U)	Steel	1 lid per pit	16.20
PIT5LSL(C/U)	Steel	1 lid per pit	16.70

*Split base

Riser for PIT5 is PIT5R , height increase is 200mm to 450mm

Riser for PIT5S is PIT5S, height increase is 150mm to 370mm



PIT5S

Coyote® DTC

(Drop Termination Closure)

Coyote® DTC (Drop Termination Closure) is versatile, compact and quick to install. The closure's compact size and rugged exterior is designed to allow for installation in tight spaces without compromising functionality. Multiple cable entrance ports provide the installer the flexibility to quickly configure the closure as needed.

Features:

- Flexible grommet sealing system supports a wide range of flat or round cable profiles
- Factory installed sealing materials
- Re-enterable and reusable
- Constructed with flame retardant UV stabilized material
- Ideal for aerial, below grade, direct buried, pole mount or interior applications
- IP68 rated



DTC1

- Size: 232mm x 194mm x 42mm
- Max splice capacity: 16
- Grommet quantity: see table for grommet options

Part Number	Description
800013853	COYOTE DTC 1 with Holder Bracket for 2x SC/LC adapters
80061091	COYOTE DTC 1 with 4.3mm - 6.4mm grommets
80061105	COYOTE DTC 1 with 6.4mm - 9.4mm grommets



DTC4/6

- Size: 274mm x 198mm x 82mm
- Max splice capacity: 24
- Grommet quantity: 4 or 6, see table for grommet options

Part Number	Description
800015048	DTC4 shell kit, add grommets, add organizer trays, add cable retention kit
800015049	DTC6 shell kit, add grommets, add organizer trays, add cable retention kit
800015048SPLICE	DTC4: 24 splice kit, 4 cable entry up to 15mm (includes assorted cable seal grommets)
800015048XC	DTC4: 24 splice kit, holder tray for 4x dual/quad SC/LC adapters (includes assorted cable seal grommets)
800015049SPLICE	DTC6: 24 splice kit, 6 cable entry up to 10mm (includes 10 assorted grommet seals)
800015049XC	DTC6: 24 splice kit + holder tray for 4x dual/quad SC/LC adapters, 6x cable entry (includes 10 assorted grommets seals)

DTC4/6

Part Number	Description
80812503	SPLICE TRAY KIT 24 splice FOR DTC 4-6
80812504	ADAPTER TRAY KIT for DTC 4-6 (also requires splice tray kit #80812503)

DTC8

- Size: 305mm x 225mm x 90mm
- Max splice capacity: 48
- Grommet quantity: 8, see table for grommet options



Part Number	Description
800015050	DTC8 Shell Kit, Add GROMMETS, Add ORGANIZER TRAYS, Add CABLE RETENTION KIT
800015050SPLICE	DTC8: 48 splice kit, 8 cable entry up to 14mm (includes assorted cable seal grommets)
800015050XC	DTC8: 48 splice kit, sc/lc adapter holder tray, 8 cable entry up to 14mm (includes assorted cable seal grommets)

Accessories

Part Number	Description
80812456	DTC8 SPLICE TRAY (12 COUNT) - max of 4



Part Number	Description
80812457	ORGANIZER #1 (SPLICE TRAY HOLDER) for DTC 8
80812489	ORGANIZER #2 (SPLICE & SC ADAPTER HOLDER) for DTC 8
80812712	ORGANIZER #3 (SPLICE TRAY HOLDER) for DTC 8
80812490	ORGANIZER #4 (NO SPLICE TRAY, LC SC ADAPTERS ONLY) for DTC 8



Accessories (Continued)



Part Number	Description
80812221	SPLICE TRAY HOLD DOWN STRAP TETHER for COYOTE DTC8



Part Number	Description
80812311	FIBER HOOK DTC 4 /6 /8



Part Number	Description
80806332	SILICONE LUBRICANT PACKET



Part Number	Description
80812223	2 PRONG CABLE RETENTION BRACKET for COYOTE DTC-8



Part Number	Description
80812492	4 PRONG CABLE RETENTION BRACKET for COYOTE DTC-8



Part Number	Description
80805139	BUFFER TUBE FELT STRIP



Part Number	Description
80805820	SMALL PARTS BAG (12 CABLE TIES)



Part Number	Description
80809960	DTC 4 / 6 HOSE CLAMP/CLIP CABLE RETENTION KIT (4 pack)
80812529	DTC 4 / 6 HOSE CLAMP/CLIP CABLE RETENTION KIT (2 pack)

Image	Part Number	Description
	8003663	2-HOLE GROMMET 2x 10.16mm - 15.2mm cables
	8003664	4-HOLE GROMMET 4x 7.6mm - 10.9mm cables
	8003665	6-HOLE GROMMET 6x 3.2mm - 6.4mm cables
	8003676	7 HOLE GROMMET KIT 6x 3.2mm - 6.4mm cable and 1x 10.16 - 15.2mm cable
	8003677	8 HOLE GROMMET KIT 8x 3.2mm - 6.4mm cables
	8003691	1 HOLE GROMMET 1x 10.6mm - 15.2mm cable
	8003692	1 HOLE GROMMET 1x 15.2 - 21.6mm cable
	8003693	1 HOLE GROMMET 1x 21.6mm - 25.4mm cable
	8003694	1 HOLE GROMMET KIT 1x 25.4mm - 31.6mm cable
	8003701BX	2 HOLE WIDE RANGE 1x 10.16mm - 15.2mm and 1x 15.2mm - 21.6mm cable
	8004045	BLANK GROMMET KIT - All Coyote DOMES
	8004065	4 HOLE GROMMET KIT 4x 6.4mm to 7.9mm cables
	80809067	GROMMET FOR COYOTE DTC 1/4/6/8 4.3mm - 5.1mm cable (small B)
	80809828	2 HOLE GROMMET FOR DTC 1/4/6/8 4mm - 4.3mm (small D)
	80809932	GROMMET FOR COYOTE DTC 1/4/6/8 6.4mm - 8.9mm cable (small C)
	80811033	GROMMET KIT DTC .170-.250 (B)

Image	Part Number	Description
	80811034	GROMMET KIT DTC .250-.370 (C)
	80811307	.350" GROMMET for COYOTE DTC 1/4/6/8 8.9mm - 10.2mm (small G)
	80812172	GROMMET for COYOTE DTC8 9.4mm - 10.7mm (F) Large
	80812219	GROMMET for COYOTE DTC8 4.3mm - 5.6mm (B) Large
	80812220	GROMMET for COYOTE DTC8 6.9mm - 8.1mm (D) Large
	80812228	7 H GROMMET for DTC 4 (B) Long
	80812229	5 H GROMMET for DTC 4 (A) Long
	80812240	2 HOLE GROMMET 3.2MM DTC 1/4/6/8 2.4mm - 3.2mm (small E)
	80812251	GROMMET for COYOTE DTC8 2x 4mm - 4.3mm (J) Large
	80812400	4 HOLE GROMMET for COY DTC8 4x 2.4mm - 3.2mm (K) Large
	80812433	ONE HOLE GROMMET DTC8 5.6mm - 6.9mm (C) Large
	80812434	GROMMET for COYOTE DTC8 8.1mm - 9.4mm (E) Large
	80812435	ONE HOLE GROMMET 11.1MM DTC8 10.7mm - 11.9mm (G) Large
	80812436	GROMMET for COYOTE DTC8 11.9mm - 14mm (H) Large
	80812437	BLANK GROMMET for DTC8 (A) Large
	80812491	BLANK GROMMET DTC 1/4/6/8 (small A)



8006944



800013691



COYOTE® Dome closures

The COYOTE® Dome closures have the versatility and features that make it a perfect choice for fiber-to-the-premise networks. Both the 6.5" and 9.5" dome closure designs use PLP's patented segmented end plate system which allows independent access to each cable port without disruption to surrounding cables. No more heatshrink and hackshaws.

Features:

- Sizes: 6.5" x 17" (218 mm x 453 mm), 6.5" x 22" (218mm x 574mm), 9.5" x 19" (292 mm x 509 mm), 9.5" x 28" (292mm x 749mm)
- Max. Splice Capacity: 6.5" x 17": (144) Single Fusion (80809958 Tray), (216) Ribbon/Mass Fusion (LGSTR144 Tray) 6.5" x 22": (240) Single Fusion (LGSTS72), (648) Ribbon/Mass Fusion (LGSTR216 Tray) 9.5" x 19": (288) Single Fusion (80809958 Tray), (720) Ribbon/Mass Fusion (LGSTR144 Tray) 9.5" x 28": (720) Single Fusion (LGSTS72), (1296) Ribbon/Mass Fusion (LGSTR216 Tray)
- Configuration: Butt/Expressed Splice
- Port Quantity: Qty 4 off 6.5" end plate. Qty 7 off 9.5" end plate
- Ground Stud Quantity: Qty 4 off 6.5" end plate. Qty 7 off 9.5" end plate
- Application: Direct buried, below grade, pole/wall mount or aerial
- Quick to assemble, no special tools required
- Available in flame retardant material
- Collar system allows for quick re-entry
- Segmented end plate design provides independent access to every cable
- Flexible grommet sealing technology supports a wide range and quantity of flat or round cable profiles. See grommet chart on page 1-4.
- Standard 6-1/2" Dome Kits provided with (2) 8003701 grommets. Customized kits available upon request.
- Standard 9-1/2" Dome Kits provided with (2) 8003692 grommets and (2) 8003693 grommets –customized kits available upon request

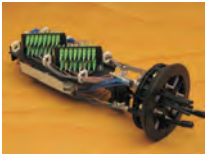
Part Number	Description
8006944	COYOTE DOME 6.5" x 17" (218 x 453mm) w/buffer tube organiser 4 Port. 144 splice
800013691	COYOTE DOME 9.5" x 19" (292 x 509mm) buffer tube organiser 7 port. 288 splice.
8006877	COYOTE DOME 6.5" x 22" (218 x 574mm) w/ buffer tube organiser. 240 splice
80061055	COYOTE DOME 9.5" x 28" (292 x 749mm) buffer tube organiser 504 splice.
80061057	COYOTE DOME MAX 9.5" x28" (292 x 749mm) Up to 720 splice count



Part Number	Description
80061106	COYOTE ONE SLIMLINE DOME w/BUFFER 3 port - No trays incl
80061107	COYOTE ONE SLIMLINE DOME w/UNITUBE 3 port - No trays incl



Part Number	Description
800013856	COYOTE ONE SLIMLINE XC CROSS CONNECT - 16 port bracket, no adapters or pigtails
800013856VLS24	COYOTE ONE SLIMLINE XC CROSS CONNECT - with 24 port LCAPC adapters, 48splice tray, pole bracket, grommets
800012185	6.5x17 COYOTE DOME XC CROSS-CONNECT (w/o trays and adapters)
800012184	6.5x22 COYOTE DOME XC CROSS-CONNECT (w/o trays and adapters)
800014222	9.5x19 COYOTE DOME XC CROSS-CONNECT (w/o trays and adapters)



Part Number	Description
800014271	COYOTE ONE HD SLIMLINE W/O DF STORAGE. Up to 144 Single Element splice
800014273	COYOTE HD DOME 6x17 w/o DF STORAGE. Up to 192 Single Element splice
800014275	COYOTE HD DOME 6x22 w/o DF STORAGE. Up to 288 Single Element splice
800014276	COYOTE HD DOME 9x19 w/ DF STORAGE. Up to 384 Single Element splice





Part Number	Description
8004045	BLANK GROMMET KIT - All Coyote DOMES



Part Number	Description
80810098	SMALL PARTS BAG ALL DOMES - CABLE RETENTION KIT



Part Number	Description
8003702	POLE/WALL BRACKET for 17" and 22" DOMES



Part Number	Description
8004003	Pit Bracket Support for 9.5 x 28" Dome



Part Number	Description
8003703	POLE/WALL BRKT COYOTE INLINE RUNT



Part Number	Description
8003835	UNIVERSAL MNTG BRACKET FOR HANDHOLES - ALL DOMES (excluding 9.5 x 28")



Part Number	Description
8003864	ADSS AERIAL HANGER BRKT for COYOTE INLINE



Part Number	Description
8003942	POLE/WALL MOUNT FOR 19" & 28" DOMES



Part Number	Description
8004004	POLE MOUNTING BRACKET COYOTE ONE
8004109	DTC4/6 POLE WALL MOUNT BRACKET



Part Number	Description
8004104	DTC8 POLE/WALL MOUNTING BRACKET KIT



Part Number	Description
8004112	DTC4/6/8 AERIAL ADSS BRACKET KIT



Part Number	Description
80811409	4 COUNT SPLICE TRAY KIT for SFMS HD domes (8 pack)

80811933	6 CT SC SPLICE TRAY KIT for SFMS HD domes (8 pack)
----------	--

80811935	12 CT SE SPLICE TRAY KIT for SFMS HD domes (4 pack)
----------	---

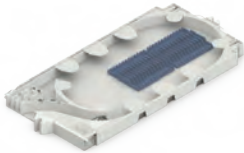




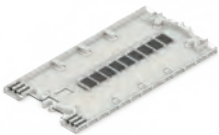
Part Number	Description
80807370	SPLICE PROTECTOR TUBE 40MM
80809958	LOW PROFILE 24 SPLICE TRAY
80808945	DEEP PROFILE 40 SPLICE TRAY



Part Number	Description
80808984	LITE-GRIP LONG TRAY, 72 Single Fusion Splice Count for 22" & 28" Domes



Part Number	Description
80805515	COY RIBBON TRAY w/BLOCKS 144 COUNT for 22" & 28" Domes



Part Number	Description
80810086	36 COUNT LITE-GRIP LONG TRAY



Part Number	Page
8003663	36
8003664	36
8003665	36
8003677	36
8003691	36
8003692	36
8003693	36
8003694	36
8003701	39
8003702	40
8003703	40
8003796	40
8003835	40
8003864	40
8003942	40
8004003	40
8004004	42
8004045	36
8004045	40
8004065	36
8004104	42
8004104	42
8004109	42
8004109	42
8004112	42
8004112	42
8006877	38
8006944	38
80061055	38
80061057	38
80061091	32
80061105	32
80061106	39
80061107	39
80805139	35
80805515	43
80805820	35
80806332	34

Part Number	Page
80807370	43
80808945	43
80808984	43
80809067	36
80809828	36
80809932	36
80809958	43
80809960	35
80810086	43
80810098	40
80811033	36
80811034	37
80811307	36
80811409	42
80811933	42
80811935	43
80812172	37
80812219	37
80812220	37
80812221	34
80812223	34
80812228	37
80812229	37
80812240	37
80812251	37
80812311	34
80812400	34
80812433	37
80812434	37
80812435	37
80812436	37
80812437	37
80812456	33
80812457	33
80812489	33
80812490	33
80812491	37
80812492	35

Part Number	Page
80812503	33
80812504	33
80812529	35
80812712	33
800012184	39
800012185	39
800013691	38
800013853	32
800013856	39
800014222	39
800014271	39
800014273	39
800014275	39
800014276	39
800015048	32
800015049	32
800015050	33
800015141	
800013856VLS24	39
800015050SDPLICE	33
800015050XC	33
80015048SPLICE	32
80015048XC	32
80015049SPLICE	32
80015049XC	32
8003701BX	36
ALMINOX	21
ALV300	21
BCST-2025-3G	10
BCST-2025-3GA	10
BCST-2025-3P	10
BCST-2025-3PA	10
BCST-4035-3G	10
BCST-4035-3GA	10
BCST-4035-3P	10
BCST-4035-3PA	10
BL-10	20
CCA13	8

Note: Pack quantities are for wholesalers' information only.

Part Number	Page	Part Number	Page	Part Number	Page
CCA15	8	DH15	8	EPTB-35-9.0AF-M12	23
CCE1312	8	DHT15	6	EPTB-40-14.0AF-M12	23
CCE1314	8	DHT19	6	EPTB-50-13.2AF-M10	23
CCE1318	8	DHTU22	6	EPTB-50-13.2AF-M12	23
CCE1324	8	DHTU25	6	EPTB-70-13.2AF-M12	23
CCE1330	8	D-K199	15	EPTB-80-13.2AF-M12	23
CCE1512	8	D-K440	15	EPTB-80-17.3AF-M12	23
CCE1514	8	D-K441	15	EPTB-95-17.3AF-M12	23
CCE1518	8	D-K443	15	EPTCU-10-5.7AF-M10	22
CCE1524	8	D-K451	13	EPTCU-10-5.7AF-M8	22
CCE1530	8	D-K455	13	EPTCU-120-16.5AF-M10	22
CCT13	6	D-K96A	13	EPTCU-120-16.5AF-M12	22
CCT15	6	DP13	8	EPTCU-120-16.5AF-M16	22
CCT19	6	DP15	8	EPTCU-120-16.5AF-M20	22
CMFT61A	25	D-PNE1314T	9	EPTCU-150-18.5AF-M10	22
CMFT68A	25	DPT12	7	EPTCU-150-18.5AF-M12	22
CMNT36	24	DPT13	6	EPTCU-150-18.5AF-M16	22
CMNT44	24	DPT15	6	EPTCU-16-6.3AF-M10	22
CMNT50	24	DPT19	6	EPTCU-16-6.3AF-M12	22
CMNT61	24	EARTH5050	9	EPTCU-16-6.3AF-M6	22
CMNT68	24	ENGO-12	17	EPTCU-16-6.3AF-M8	22
COMBHOOK	17	ENGO-16	17	EPTCU-185-20.0AF-M12	22
CTE1300	6	EPCJ-120-16.5AF	23	EPTCU-185-20.0AF-M16	22
CTE1312	6	EPCJ-16-6.3AF	23	EPTCU-240-23.1AF-M12	22
CTE1314	6	EPCJ-240-23.1AF	23	EPTCU-25-7.7AF-M10	22
CTE1318	6	EPCJ-25-7.7AF	23	EPTCU-25-7.7AF-M12	22
CTE1324	6	EPCJ-35-9.2AF	23	EPTCU-25-7.7AF-M8	22
CTE1920	6	EPCJ-50-10.4AF	23	EPTCU-35-9.2AF-M10	22
D-C70	9	EPCJ-70-11.5AF	23	EPTCU-35-9.2AF-M12	22
D-CEC070	5	EPCJ-80-14.2AF	23	EPTCU-50-10.4AF-M10	22
D-CEC095	5	EPCJ-95-14.2AF	23	EPTCU-50-10.4AF-M12	22
D-CEC15070	5	EPTB-120-22.0AF-M12	23	EPTCU-50-10.4AF-M8	22
D-CEC15120	5	EPTB-150-22.0AF-M12	23	EPTCU-6-4.4AF-M6	22
D-CLAMP210	6	EPTB-185-22.0AF-M12	23	EPTCU-70-11.5AF-M10	22
D-EARTHRITE	9	EPTB-185-22.0AF-M16	23	EPTCU-70-11.5AF-M12	22
D-EC13D	6	EPTB-240-28.5AF-M12	23	EPTCU-70-11.5AF-M16	22
D-ERB1	9	EPTB-240-28.5AF-M16	23	EPTCU-95-14.2AF-M10	22
D-ERB3	9	EPTB-300-28.5AF-M12	23	EPTCU-95-14.2AF-M12	22

Note: Pack quantities are for wholesalers' information only.



Part Number	Page
EPTCU-95-14.2AF-M16	22
GEBR 20600	18
GEBR-16200	18
GEBR-16300	18
GEBR-16400	18
GEBR-16500	18
GEBR-20200	18
GEBR-20300	18
GEBR-20400	18
GEBR-20500	18
GSHB-16200	18
GSHB-16300	18
GSHB-16400	18
GSHB-16500	18
GSHP-16	18
HB22	19
HB22T	19
HB24	19
HB24T	19
HB25	19
HB25T	19
HB26	19
HB26T	19
HB28	19
HB28T	19
IBSC425	11
IBSC435	11
IBST435-2	11
IPSNG	17
K442	15
K445	15
K446	15
K470	15
K471	15
K472	15
K473	15
K474	15
K475	15

Part Number	Page
LT43-1	19
LT75-1	19
LTD58-1	19
LTD75-1	19
NHP100AD	17
PIT1	29
PIT1LCT(E/C/U)	31
PIT1LST(E/C/U)	31
PIT2	31
PIT2LCT(E/C/U)	31
PIT2LST(E/C/U)	31
PIT5	31
PIT5LCT(E/C/U)	31
PIT5LSL(C/U)	31
PIT5LST(E/C/U)	31
PIT5S	31
PLPFT36A	25
PLPFT44A	25
PLPFT50A	25
PNE1918-T	8
PNE1924-T	8
PNE1930-T	8
PNE19-COUPLER	8
PNE19-DRIVE	8
PNE19-POINT	8
POLEFIX	27
PSCCS-26-38	26
PSCCS-36-52	26
PSCCS-50-75	26
PSCCS-75-100	26
PSCCT-27-38	26
PSCCT-38-51	26
PSCCT-51-69	26
PSCCT-69-90	26
PSCCT-90-118	26
R235	14
R235-4	14
R236	14

Part Number	Page
R236-4	14
SB3	21
SCT13	7
SCT15	7
SDP12T	7
SDP13	8
SDP13T	6
SDP15	8
SDP15T	6
SSD-2X25AL19	12
SSS-1230	20
SSS-1630	20
SSS-1930	20
SSSB-1230	20
SSSB-1630	20
SSSB-1930	20
SSS-TOOL	20
STE1312	7
STE1314	7
STE1318	7
STE1324	7
STE1330	7
STE1412	7
STE1415	7
STE1418	7
STE1424	7
STE1430	7
TOOL-HD-01	18
UEC11MG	28
UEC11MGE	28
UEC11MGS	28
UEP240	29
UEP288	29
UT11G	28
UT11GV	28
UT11SG	28
UT11SGV	28

Note: Pack quantities are for wholesalers' information only.

MANUFACTURING CAPABILITIES

- Manufacturing factory located at Glendenning, NSW
- Sheet metal fabrication
- Ultra high speed laser cutting
- Aluminium die-casting
- Steel forging, wire forming
- Aluminium stainless steel welding
- Powder coating
- Tool design and manufacturing
- General assembly

TESTING CAPABILITIES

- Mechanical and electrical type test to Australian and IEC Standards
- NATA Accredited (Mechanical)
- AS/NZS ISO 9001 - 2016

TECHNICAL SUPPORT

Preformed Line Products Australia have been market leaders and well respected in the fields of electrical and mechanical engineering for many years, working together to meet the challenging demands of the overhead power industry.

Product design, research and development both locally and with the International Support of PLP's network of 17 sites around the globe ensure PLP offer the best solution for any installation.

SALES AND MARKETING

A dedicated team focused on exceeding customer expectations and ensuring service and support at the highest level.

With Territory Managers and Representatives located throughout Australia supported by a centralised Internal Sales and Projects & Tenders Team, PLP are available to assist with your product selection, quoting and ordering needs.



Glendenning Office, Sydney



Testing



Aluminium and Stainless Steel Welding



High Speed Laser Cutting



CNC Machining



Dispatch Area



PERFORMED
LINE PRODUCTS

Performed Line Products (Australia) Pty Ltd

ABN: 27 004 533 877

190 Power Street, Glendenning, NSW 2761 Australia
PO Box 626, St Marys, NSW 1790 Australia

P +61 2 8805 0000
E: sales@performed.com.au
www.performed.com.au

